



BRIAN McKNIGHT



EDDIE PALMIERI



RA RA RIOT



MARILYN McCOO & BILLY DAVIS, JR.
in *Up, Up and Away!*



MEGAN HILTY



2016 MARINA DEL REY

Summer Concert

SERIES

SYMPHONIC THURSDAYS | 7PM

JULY 7

OPERA AT THE SHORE

JULY 21

MEGAN HILTY

AUGUST 4

BALLET FOLKLÓRICO DE LOS ÁNGELES

AUGUST 18

PUCCINI'S MADAMA BUTTERFLY

POP SATURDAYS | 7PM

JULY 16

MARILYN McCOO & BILLY DAVIS, JR.
IN UP, UP AND AWAY! A MUSICAL FABLE

JULY 30

BRIAN McKNIGHT

AUGUST 13

RA RA RIOT

AUGUST 27

EDDIE PALMIERI SALSA ORCHESTRA



SYMPHONIC THURSDAYS

MARINA DEL REY SYMPHONY
FRANK FETTA, MUSIC DIRECTOR
Rich Capparella, Master of Ceremonies
Popular KUSC-FM Personality

JULY 7 OPERA AT THE SHORE

Emerging opera stars from the Loren L. Zachary National Vocal Competition perform along the water in arias and ensembles from classically beloved operas in this always-popular concert. Maestro Frank Fetta conducts the Marina del Rey Symphony.

JULY 21 MEGAN HILTY

Join us for a sensational performance by Tony-nominated actress and singer Megan Hilty. Best known for her performances as Lorelei Lee in the Encores! production of *Gentlemen Prefer Blondes*, Doralee Rhodes in Broadway's *9 to 5: The Musical* and Glinda in the international musical hit *Wicked*, this rising Broadway star is not to be missed. Accompanied by her four-piece band, Megan will put her vibrant and inspired spin on many Broadway, American and pop standards.

AUGUST 4 BALLET FOLKLÓRICO DE LOS ÁNGELES

The nation's premier Mexican folk dance company, Ballet Folklórico de Los Ángeles, returns to the Marina to bring to life "Tango y más," a series of Latin dances, accompanied by Marina del Rey Symphony's performances of Arturo Márquez's Danzon No. 2, Cole Porter's "Begin the Beguine," Carlos Gardel's "Tango por una cabeza" (arranged by John Williams) and more.

AUGUST 18 PUCCINI'S MADAMA BUTTERFLY

Maestro Frank Fetta leads the Marina del Rey Symphony in another spectacular, fully staged opera, performing an abridged production of Giacomo Puccini's *Madama Butterfly*. Set in Japan, the opera features Puccini's favorite heroine Cio-Cio-San, known as Madame Butterfly, and her beloved Lieutenant Pinkerton in a tragic tale of love, hope and betrayal. Zeffin Quinn Hollis returns as director.



POP SATURDAYS

JULY 16 MARILYN McCOO & BILLY DAVIS, JR. IN UP, UP AND AWAY! A MUSICAL FABLE

The original stars of iconic 70's music group, The 5th Dimension, Marilyn McCoo and Billy Davis, Jr. have received seven Grammy Awards, 15 Gold Records and three Platinum Records. Named by Billboard as "The First Couple of Pop and Soul," Marilyn and Billy invite you to enjoy *Up, Up and Away! A Musical Fable* about this dynamic duo's journey and celebration of their own music, including a loving tribute to The Beatles.

JULY 30 BRIAN McKNIGHT

Legendary R&B singer-songwriter, performer, producer and musician Brian McKnight is a multi-platinum recording artist who has sold more than 25 million albums worldwide and has earned an impressive 16 Grammy Award nominations. Known for his romantic ballads, his music is rooted in gospel and jazz, genres he listened to as a child in a musical family. This multi-talented, stellar artist will grace the Marina with soulful tunes from his highly anticipated new album, *Better*.

AUGUST 13 RA RA RIOT

Originally from Syracuse, indie rock band Ra Ra Riot is known for its "baroque pop" sound that blends rock with melodic strings. With their newly-released fourth album, *Need Your Light*, Ra Ra Riot channels a fresh, eclectic style with songs like "Water," "Bouncy Castle," and "Absolutely," embracing upbeat electronics, heightened experimentation and expansive soundscapes.

AUGUST 27 EDDIE PALMIERI SALSA ORCHESTRA

Dubbed "The Latin [Thelonius] Monk," nine-time Grammy winner Eddie Palmieri brings his explosive, unpredictable Latin dance sound and rhythms to the Marina by introducing rock licks, urban poetry and elements of tango, cumbia, waltz and the folkloric music of his beloved Puerto Rico. Alongside his full Latin dance band, Eddie will get the audience on its feet and dancing throughout the night.

ALL CONCERTS
ARE FREE!
PERFORMANCES
7-9PM



DIRECTIONS

BURTON CHACE PARK

13650 Mindanao Way
Marina del Rey, CA 90292

MARINA DEL REY FROM THE NORTH:

405 South
Exit onto Marina Freeway (90-W)
Continue 2.5 miles
Left onto Mindanao Way
Continue 1.5 miles to Burton Chace Park

MARINA DEL REY FROM THE SOUTH:

405 North
Exit onto Marina Freeway (90-W)
Continue 2.5 miles
Left onto Mindanao Way
Continue 1.5 miles to Burton Chace Park

MARINA DEL REY FROM THE EAST:

I-10 West to 405 South
Exit onto Marina Freeway (90-W)
Continue 2.5 miles
Left onto Mindanao Way
Continue 1.5 miles to Burton Chace Park



PARKING GUIDE

COUNTY LOT 5

4545 Admiralty Way
THURS & SAT - \$7

COUNTY LOT 4

13500 Mindanao Way
THURS - \$8 | SAT - \$10

COUNTY LOT 77

13560 Mindanao Way
THURS - \$8 | SAT - \$10

FISHERMAN'S VILLAGE

13755 Fiji Way

From Fisherman's Village, take the WaterBus to the concerts at Burton Chace Park!

\$1 PER 20 MIN., MAXIMUM \$15



MARINA DEL REY

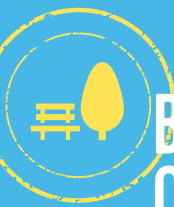
make a splash in LA



DON KNABE
LOS ANGELES COUNTY
SUPERVISOR



COUNTY OF LOS ANGELES
DEPARTMENT OF
**BEACHES
& HARBORS**



VISITING BURTON CHACE PARK

CONCERT SEATING

- Festival seating is allowed in any of the open public areas.
- Guests may bring low-back chairs or standard-sized blankets, but belongings must be attended to at all times.
- The park is not responsible for lost or stolen items.
- There is no standing or loitering on walkways as fire code regulations require they must be clear at all times.

GOURMET FOOD TRUCKS

Bring your own picnic to enjoy or grab a bite to eat from gourmet food trucks at the park, starting at 5pm on concert nights.

MARINA MOVIE NIGHTS - Free!

Enjoy our free outdoor movie screenings under the stars at the park this summer! All screenings are on Saturdays and start at 8pm.

- **July 9 - PAN** (PG)
- **July 23 - EARTH TO ECHO** (PG)
- **August 6 - THE SPONGEBOB MOVIE: SPONGE OUT OF WATER** (PG)
- **August 20 - MY FAIR LADY** (G)

NEW!

Join us for **BEACH MOVIE NIGHTS** at Dockweiler Youth Center in Playa del Rey this summer! Visit marinadelrey.lacounty.gov for dates, time and titles.

STAY
CONNECTED



facebook.com/lacdbh



twitter.com/lacdbh

ilove
mdr



PARK & RIDE IN MARINA DEL REY



MARINA DEL REY WATERBUS

Park your car and take the WaterBus to and from the concerts to enjoy a unique water's-eye-view of Marina del Rey. For more information, call (310) 628-3219 or visit marinawaterbus.com.

Fare:

\$1 per person, one way, available for purchase at each dock location. CASH ONLY. Season pass for \$30.

Schedule:

June 16 - September 5

Thursdays - Saturdays: 11am - midnight

Sundays: 11am - 9pm

Holiday Schedule

Fourth of July: 11am - midnight

Labor Day: 11am - 9pm

Boarding Locations:

1. **Fisherman's Village**, 13755 Fiji Way
2. **Burton Chace Park**, 13650 Mindanao Way
3. **Waterfront Walk**, 4375 Admiralty Way, Ritz-Carlton Hotel Dock Gate, #E-200
4. **Marina "Mother's" Beach**, 4101 Admiralty Way
5. **Dolphin Marina**, 13900 Panay Way, Dock Gate #202
6. **Esprit**, 13900 Marquesas Way, Dock Gate #B-602½
7. **Harbor at Marina Bay**, 14015 Tahiti Way, Dock Gate #B-3100
8. **Del Rey Landing**, 13800 Bora Bora Way, Fuel Dock Gate



BEACH SHUTTLE

Park your car and catch a ride landside on the Beach Shuttle directly to and from Chace Park on concert nights. The Beach Shuttle also provides services to major points of interest such as WaterBus stops, Fisherman's Village, Mother's Beach and Venice Beach Pier.

For schedule and route information, call 310.305.9545 or visit marinadelrey.lacounty.gov.